

Nixvue Digital Album Lite

Quick Start Users Guide
(User Installable Hard Disk Version)

About the DA Lite



Digital Album Lite Features –

- Easy and robust way to store your digital image data.
- Ultra Fast USB 2.0 connection to PC – transfer your files in minutes not hours.
- Easy reliable operation via LCD that gives clear indication of unit operation
- Verify that your files have been copied – no blinking lights to interpret.
- User upgradeable firmware and hard disk.
- Uses Wind River VxWorks Operating System – the same one used on the Martian Lander.
- Rechargeable Li-Ion battery
- Optional AA battery pack and Car Adapter for “On the Go” power options.

Before you Begin

Congratulations on your purchase of the Nixvue Digital Album Lite!

You have purchased a state of the art storage device for digital images and other data. Before you use it take a moment to read the cautionary notices below. This will help insure the safe operation of your unit and also help prevent damage from occurring due to mishandling.

WARNING

Do not open, disassemble or alter any part of the equipment except where expressly described by this manual. Non-expert handling of the device may damage it or cause a high-voltage electrical shock.

Do not touch internal parts of the equipment that have become exposed as a result of damage.

Do not operate the equipment if it emits smoke or noxious fumes. Unplug the power cord connected to the equipment immediately. Consult your distributor or product support center.

Do not allow the equipment to come into contact with, or become immersed in, water or other liquids.

If the exterior of the equipment comes into contact with liquids or salt water, wipe it dry with a soft absorbent cloth.

If water or any other foreign substances enter the interior of the equipment, turn off the power and unplug the power cord connected to the equipment immediately. Consult your distributor or the nearest product support center.

If the product or any accessory is not working properly, contact your dealer for warranty service.

Do not use, place or store the equipment in places that are subject to strong sunlight or high temperatures, such as the dashboard or trunk (boot) of a car. Exposure to intense sunlight and heat may cause the batteries to leak, overheat or explode, resulting in fire, burns or other injuries. High temperatures may also cause deformation of the casing. Ensure that there is good ventilation when charging the unit.

Do not store the equipment in humid or dusty areas. Storage in such areas could result in fire, electrical shock or other damage.

Do not drop, knock or shake the equipment. Rough handling can damage the electronics of the equipment.

DISCLAIMER

While every effort has been made to ensure that the information contained in this manual is accurate and complete, no liability will be accepted for any errors and/or omissions made.

The manufacturer reserves the right to make changes and improvements to the specifications and features of the hardware, software and firmware of the products described in this document without prior notice.

Reproduction, transfer, distribution or storage of part or all of the contents in this document in any form is prohibited without prior written permission of the manufacturer.

The manufacturer does not warrant damages for corrupted data or lost data due to mistaken operation or malfunction of the hardware, software, firmware, the CF Card Adapter, personal computers and any other peripheral devices and adapters nor does it warrant damages arising from incorrect handling during installation of a hard disk by the end user.

TRADEMARK ACKNOWLEDGEMENTS

Nixvue Digital Album is a registered trademark of Nixvue Systems Pte. Ltd.

Microsoft, Windows, Windows NT, Windows 2000, Windows XP are either registered trademarks or trademarks of Microsoft Corporation in the United States and/or other countries.

Other names and products not mentioned above may be registered trademarks or trademarks of their respective owners.

Contents of Package



Before proceeding please check to insure that your package contains the following items:

- 1.) AC Adapter 100-240VAC
- 2.) 1400 mAh Nixvue Li-Ion Battery
- 3.) Digital Album Lite Main Unit
- 4.) Padded Case & Strap
- 5.) USB 2.0 Cable
- 6.) Nixvue Driver CD ROM
- 7.) Digital Album Lite Manual
- 8.) Plastic Packet containing: 4 screws, 4 silicon feet, and 1 length of Kapton tape

Tools Required for Installation



Tools:

In order to install the hard drive into the Digital Album Lite you only need a pair of scissors to cut the Kapton tape to length and a Philips (sometimes referred to as a “plus”) screwdriver. Make sure that the screwdriver is large enough to fit snugly in the slots on the provided screws.

DA Lite Buttons



The operation of the DA Lite is controlled by these five buttons on the front of the unit:

Keys as shown in picture from left to right:

The **Star** key is used to select sub menus or to approve a menu option.

The **Up Arrow** key is used to move up the menu.

The **Power On/Enter** key is used to power the unit on/off or to execute an action.

The **Down Arrow** key is used to move down the menu.

The **Pound** key is used as a cancel key.

Connectors



USB 2.0 and DC Power connectors



USB 2.0 cable and DC Power connected



Compact Flash Slot

Note: The Compact Flash card is inserted with the top of card facing away from you when you hold the DA Lite. See the users manual for more information on how to insert the card.

Hard Drives Supported



Supported Hard Drive Types:

The Digital Album Lite will support a standard IDE 2.5" laptop type hard drive that is 9.5mm thick. Selected hard drives from Fujitsu, Hitachi, IBM, and Toshiba have all been used successfully.

The size limit (in GB) of the drive is the "one partition limit" imposed by the FAT32 file system used by the VxWorks Operating System. Currently Nixvue is shipping units up to 60GB in capacity.

If you are installing a second hand hard drive make sure that the hard drive you select is in good operating condition and that the connector pins are straight before trying to install it. If you have any data on the hard disk copy it to other storage media before installation. The formatting process used by the Digital Album Lite during the installation will permanently erase any data on the drive and you will not be able to recover it later.

Install Battery



1.) Remove battery Cover



2.) Battery Compartment showing connector



3.) Keyed battery connector



4.) Unit battery connector



5.) Insert battery connector into unit

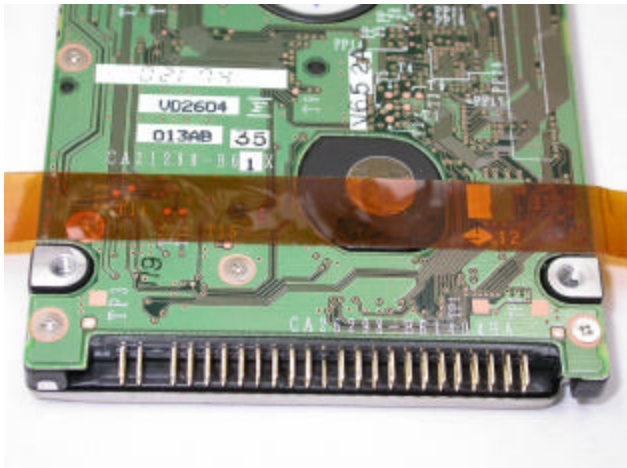


6.) Put Battery in unit and close cover

Prepare Hard Disk



1.) Remove the length of Kapton tape from the plastic bag and apply to the bottom of the hard disk as shown. Center the tape across the hard drive. The Kapton tape will insulate the hard disk and the circuit board from any static electricity that might enter via the back cover.



2.) Position the tape against the machined stub where the screws are inserted.

3.) If there are any jumpers on the drive remove them since you should not need them. The drive should be configured as a "Master" device. (Note: most laptop drives do not ship with jumpers)



4.) Turn the HD over and trim tape to length.

5.) Be careful not to cover any vent hole on the top surface of the hard disk – this hole needs to be uncovered for the proper operation of the hard disk.

6.) The hard disk is now ready to be installed into the DA Lite.

Install Hard Disk



1. Remove large back cover plate for DA Lite by grasping the DA Lite in one hand. With the other hand slide the cover away from the main unit and set it aside for replacement later. **DO NOT** try to pry the cover up and away from the unit or you will break the tabs that hold it in place (requiring you to order a new cover). Note the grey plastic plate covering the CPU shown in the picture. This plate will help you align the hard disk correctly.



2. Gently place the hard disk upside down (with the green PCB facing upwards as shown in the picture) with the connector end of the hard disk pointing into the unit. The outer part of the hard disk will rest on two tabs that protrude up from the unit. These two tabs will help hold the drive in place after it has been inserted into the connector in the unit.



3. The picture at left shows how the outside end of the hard disk is supported by the tabs.

Hard Disk Install – Continued



4.) Hold the DA Lite with one hand and gently push the hard disk into the unit. When it stops, push the hard disk gently down on the two tabs so that the tabs spread apart. Then gently push the hard disk into the unit. As the hard disk goes into the unit it will clear the plastic bar over the Compact Flash slot allowing it to move down into the unit.

Note: If the hard disk does not seat properly in the connector do not force it as you may damage the unit or the hard disk. Remove the hard disk and check to see if there are any bent pins. If they are bent, gently straighten with a needle nose pliers and repeat Step 4.



5.) Verify that the hard disk is seated properly by checking the alignment of the plastic tab with the screw hole located on the side of the hard disk. If it is seated properly the “button” on the tab will fit snugly in the screw hole on the side of the hard disk.



6.) Another indicator that the hard disk is seated properly is when the screw hole on the drive lines up with the hole in the case.

Note: Although the mounting holes are standard in spacing and size for all laptop hard disks, the thickness may vary so you may need to move the drive back and forth slightly to align the hard disk pins with the internal connector. Take your time and do not force anything and you will be able to seat the hard disk properly.

Close Case



7.) After the hard disk drive is properly seated in the unit, place the cover on the unit and gently slide it into place while pressing the cover down onto the unit. The cover will be closed when the two holes in the cover align with the holes in the hard disk.

Note: There are two small tabs on the inside of the cover that fit into the two slots in the plastic rail that is across the Compact Flash slot.



8.) Use the Philips screwdriver to insert the screws into the two case holes on the main unit, tighten until snug. Do not over tighten or you may damage the case or the hard disk.

9.) Insert the two remaining screws into the holes in the cover and tighten until snug. Do not over tighten or you may damage the case or the hard disk.



10.) Remove the silicon feet from the plastic strip and place one over each screw on the unit as shown in the picture.

Format Hard Disk



1.) Plug AC adapter into DA Lite



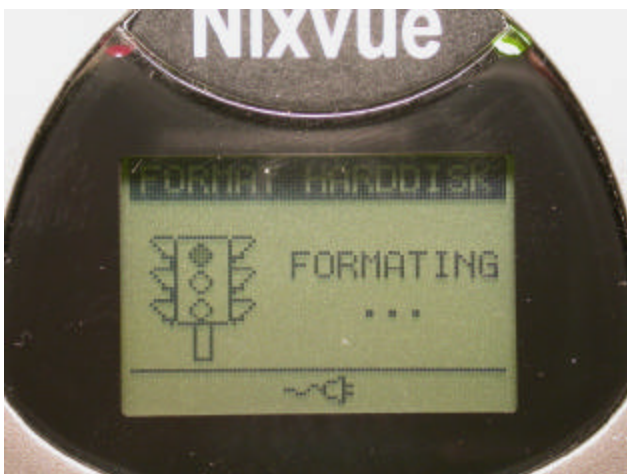
2.) Remove Plastic seal from front bezel



3.) Turn on unit and press * (Star) key



4.) Use down arrow key - select format HD



5.) Press Enter Key – format begins



6.) Wait for the format complete menu

Note: The RED LED will flicker during format indicating normal operation.

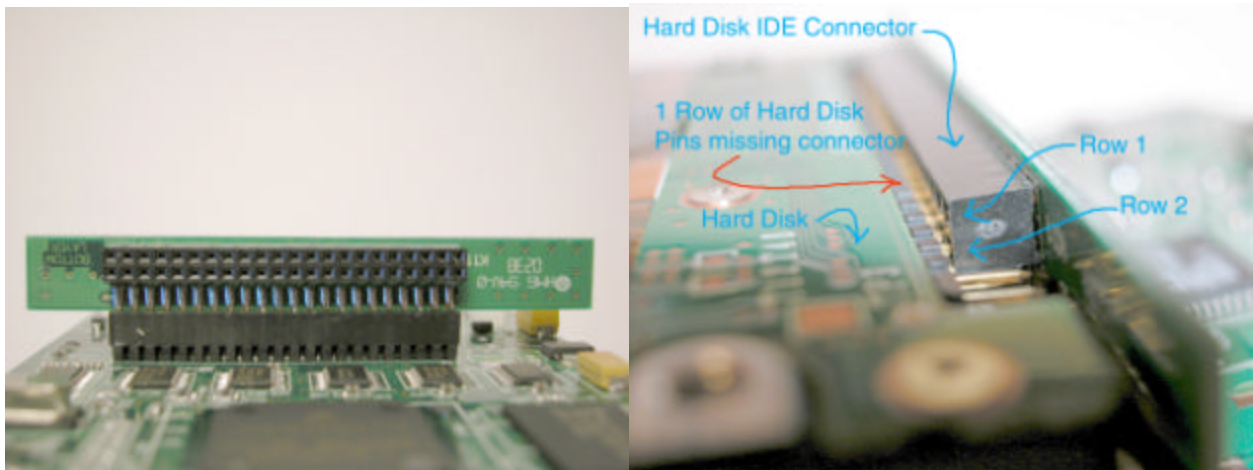
Installation Troubleshooting

In the event that the hard disk does not format check the following items:

- 1) Can you hear the hard disk spin up when the format should begin?
- 2) Can you see the RED LED flicker?

If NOT then there the hard disk pins are not inserted correctly into the connector in the unit.

In the picture (below left) of the DA Lite motherboard that there is a dual row of holes in the IDE connector that the hard disk pins need to fit into. Because the hard disk is inserted at an angle, occasionally the drive will miss the top row of pins as shown in the picture below (on the right).



If this happens gently remove the hard disk and check to see if any pins on the hard disk are bent. If so gently and carefully straighten them. Take your time.

Next take a thin non-sharp object like a kitchen butter knife and carefully and gently insert it between the plastic case and the hard disk IDE connector to slightly move the connector down toward the DA Lite motherboard. It does not need to move very much only 1 mm or so. Work slowly and carefully so as to not damage the DA Lite motherboard or the DA Lite case since the warranty does not cover damage caused by the user.

Try again to insert the hard disk into the DA Lite – you should feel the hard disk as it makes connection and slides into the connector.

Test the installation by trying to format the hard disk and watching for the RED LED hard disk access light to flicker.

If it does not work repeat the above process.

In the event that you continue to have problems contact DIGITAL-GEAR.COM at: support@digital-gear.com or sales@digital-gear.com.

Test the Installation

The unit should now be ready for use. To test it, take some pictures with your digital camera and try to copy them to the DA Lite (Power on unit, insert memory card and press enter). The unit will indicate if the operation has completed correctly. Then do a verify operation to check that the files have copied correctly. If they have copied correctly the unit is now ready to use.

IMPORTANT NOTE: Become thoroughly familiar with the DA Lite and its operation before going on vacation or using it to record an important event like a wedding. Practice and test the entire digital imaging workflow 3-4 times to insure that everything is functioning correctly and so that you understand how the DA Lite works. This will help prevent any incorrect operation that might cause the loss of data.

Charge Battery

Before using the DA Lite on battery power you will need to charge the battery. Plug the AC Adapter into the unit and let it charge until the charge indicator light changes from RED to GREEN. After the battery is fully charged the unit is ready to use. The actual usage time when powered by the internal battery will vary depending on how much hard disk access there is and how fast the memory card is that you are copying from. In normal conditions you should be able to use the unit for more than 1 hour before a recharge is needed. The AC Adapter will operate from 100-240VAC. **Note:** The unit will only charge while it is powered off. It will not charge when powered on.

How to get the most out of your DA Lite

The DA Lite is a state of the art electronic device designed to give you easy and reliable storage of your digital images. To get the most out of it follow these suggestions.

- Treat the DA Lite like you treat your camera or a laptop computer. Do not drop it or get it wet. Do not treat it roughly and it should last a long time.
- When copying files to the DA Lite do not bump or jar the unit. Laptop hard disks are very robust but if you treat them badly they can fail.
- Keep the DA Lite in the storage case when you are not using it to protect it.
- Always backup the data on your DA Lite to a CD or DVD for archival purposes laptop hard disks are very robust but like all mechanical devices there is always a potential for failure. Digital images do not have a negative like a film image does – use the CD or DVD to make your digital negatives and protect your valuable memories.
- Setup and always follow a well thought out workflow – A typical workflow includes: 1.) Take pictures on digital camera. 2.) Insert camera media into DA Lite and copy images to hard disk. 3.) Verify that images have been copied correctly by using the “Verify” function on DA Lite. 4.) Archive the data on your DA Lite to a CD or DVD using your computer. **DO NOT** utilize the DA Lite as a long-term permanent storage device.

DA Lite Accessories

If you take a lot of pictures or have a problem finding an AC outlet to recharge the DA Lite, you may want to purchase several options accessories for portable power.

AA Battery Pack – Holds 8 AA batteries (Lithium Ion, NiMH, or Alkaline may be used)

Car Lighter Adapter – Allows DA Lite to be powered from a 12V car lighter

Spare Battery – Nixvue Internal 3.7 volt 1400 mAh Lithium Ion battery

Troubleshooting & Technical Support

Information on troubleshooting problems with the DA Lite can be found in the User Manual included with the unit. If the problem you are encountering is not listed additional information can be obtained from Nixvue Support: support@nixvue.com or from the dealer where you purchased the DA Lite. If you purchased online from DIGITAL-GEAR.COM contact them at: support@digital-gear.com

Return Information

In the event that you need to return the DA Lite for service please contact your dealer for instructions on the procedure you should follow. Failure to follow the return procedure may result in charges or delay in servicing your unit.

Warranty Information

LIMITED WARRANTY for USA ONLY

The manufacturer warrants to the original purchaser of this product that the equipment shall be free of defects resulting from workmanship or component defects for a period of one (1) year from the date of purchase. Defects covered by this Limited Warranty shall be rectified either by repair or at the manufacturer's discretion, by replacement. In the event of replacement, the replacement unit will be warranted for the duration of the original one (1) year period or thirty (30) days whichever is longer. THERE ARE NO OTHER ORAL OR WRITTEN WARRANTIES EXPRESS OR IMPLIED, INCLUDING BUT NOT LIMITED TO THOSE OR MERCHANTABILITY OR FITNESS FOR A PARTICULAR PURPOSE.

This Limited Warranty is non-transferable, and does not apply if the product has been damaged by negligence, accident, abuse, misuse, modification, misapplication, shipment to the manufacturer or servicing through someone or agency other than authorized service centers. To be eligible for warranty service, a defective product must be sent to and received by the manufacturer within the stated warranty period. The manufacturer does not warrant that this product will meet your requirements. It is your sole responsibility to determine the suitability of this product for your purposes. The manufacturer does not warrant the compatibility of this product with your computer or related peripherals, operating systems and software.

THE MANUFACTURER'S SOLE OBLIGATION AND LIABILITY UNDER THIS WARRANTY IS LIMITED TO THE REPAIR OR REPLACEMENT OF A DEFECTIVE PRODUCT. THE MANUFACTURER SHALL NOT, IN ANY EVENT, BE LIABLE TO THE PURCHASER OR ANY THIRD PARTY FOR ANY INCIDENTAL OR CONSEQUENTIAL DAMAGES OR LIABILITY IN TORT RELATING TO THIS PRODUCT OR RESULTING FROM ITS USE OR POSSESSION.

The laws of the Republic of Singapore govern this Limited Warranty.